

ALUMINUM AND SUPPLY

PRIVATE ENTERPRISE

CLASSIC RAILING SYSTEM CRS90

The CRS-Classic Railing System is designed for interior and exterior weather exposed applications and is suitable for use in all natural environments. It's a series of aluminum extrusions and components for constructing guards and rails for decks, balconies, stairs and other building elements. The CRS may be used for residential, commercial and industrial applications. The CRS is an engineered system designed for the following criteria:

The design loading conditions are:

On Top Rail:

Concentrated load = 200 lbs any direction, any location

Uniform load = 50 plf, perpendicular to rail

On In-fill Panels:

Concentrated load = 50 psf

Uniform load = 25 psf on area of in-fill, including spaces

Wind load = 100 psf on projected surface face area Refer to IBC Section 1607.7.1

The CRS system will meet or exceed all requirements of the 2006, 2009 and 2012 International Building Codes and International Residential Codes, 2010 and 2013 California Building and Residential Codes, Florida Building Code and 2005 Aluminum Design Manual. The CRS system meets the requirements of ASTM E 985-00 Standard Specification for Permanent Metal Railing Systems and Rails for Buildings.

Bill of Material

We offer our customers free material estimates. Please submit a quick sketch of your project to info@supply.by and we will get you precise bill of material in just few minutes.

Shop Drawings and Custom Solutions:

We provide free of charge shop drawings for standard applications for integration in architectural drawings or for licensed engineer's review and approval. You can also request engineering of custom solutions for our products. Please submit your request to info@supply.by

Building Code Requirements

Codes and safety requirements are subject to local regulations and can change without notice.

Please contact local authorities to ensure that your construction project is in compliance with all rules and regulations.

ADA Compliance

Please refer to the latests standards for accessible design to check for compliance with ADA requirements.

Structural Strength and Testing Data

We develop our products to meet industry standards, however we are not responsible for approval of any of our products for structural strength. Please consult with a licensed engineer to determine that product being used is of adequate structural strength for your application.

NOTES:

All screws and anchors/bolts material to be 316 grade stainless steel.

Standard colors:

OYSTER WHITE / RAL 1013



SKY WHITE / RAL 9016



AGATE GRAY / RAL 7038



BEIGE GRAY / RAL 7006

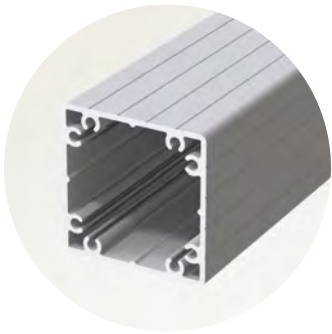
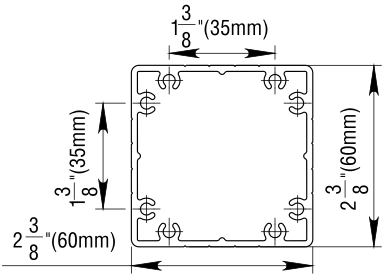


SILVER METALLIC / RAL 9006



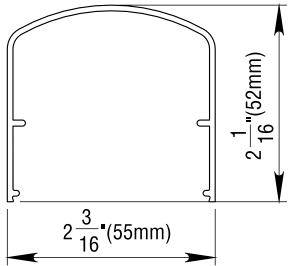
SYSTEM COMPONENTS

Description	Post Profile
Item #	PP-1
Weight, lb/ft	1.34
Lenght	244"

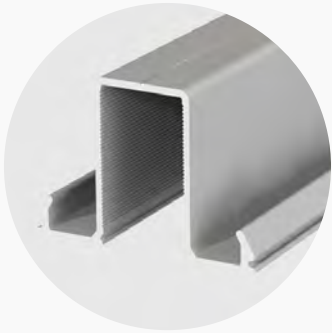
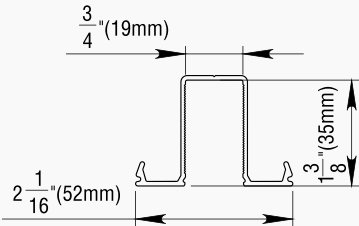


SYSTEM COMPONENTS

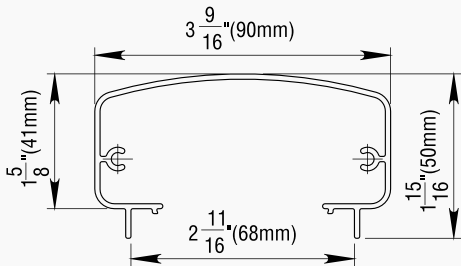
Description	Hand Rail
Item #	HR-1
Weight, lb/ft	0.42
Lenght	244"



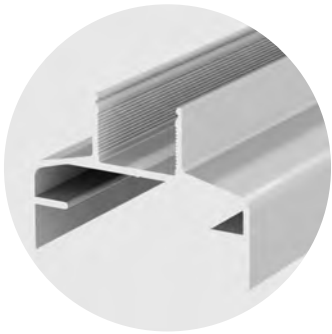
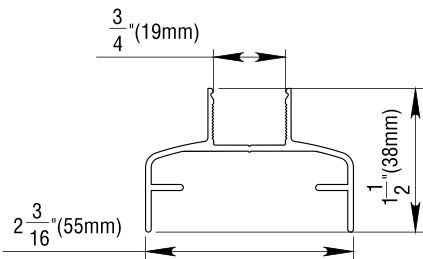
Description	Top Rail
Item #	TR-1
Weight, lb/ft	0.35
Lenght	244"



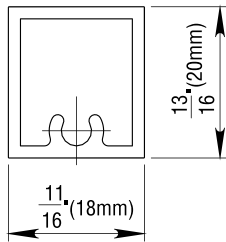
Description	Hand Rail
Item #	HR-2
Weight, lb/ft	0.69
Lenght	244"



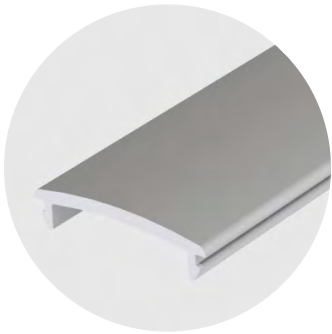
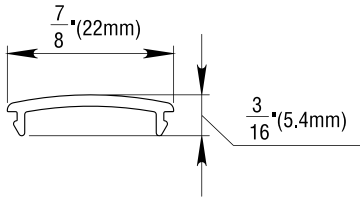
Description	Bottom Rail
Item #	BR-1
Weight, lb/ft	0.39
Lenght	244"



Description	Picket Profile
Item #	P-1
Weight, lb/ft	0.23
Lenght	244"

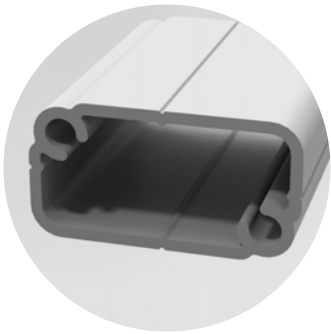
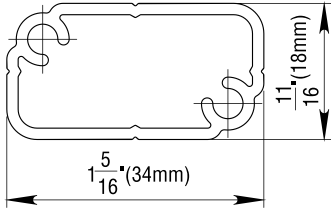


Description	Snap Cover
Item #	SC-1
Weight, lb/ft	0.07
Lenght	244"



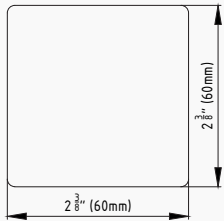
SYSTEM COMPONENTS

Description	Shear Block
Item #	SB-1
Weight, lb/ft	0.28
Lenght	244"

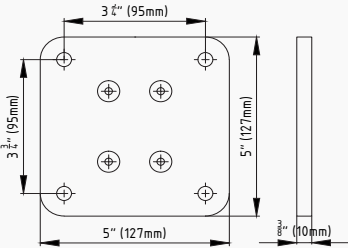


SYSTEM COMPONENTS

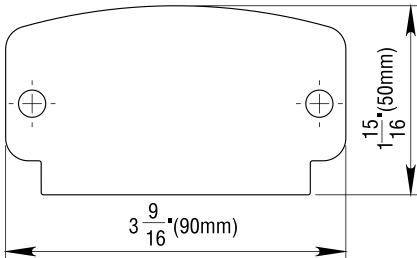
Description	Post Cover
Item #	PC-1
Weight, lb	0.07
Quantity, pcs	1



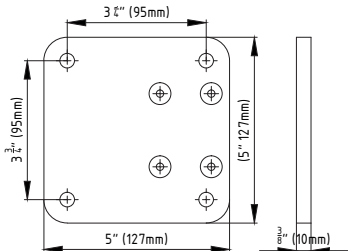
Description	Mounting Plate
Item #	MP-1
Weight, lb	0.17
Quantity, pcs	1



Description	End Cap
Item #	EC-1
Weight, lb	0.02
Quantity, pcs	1

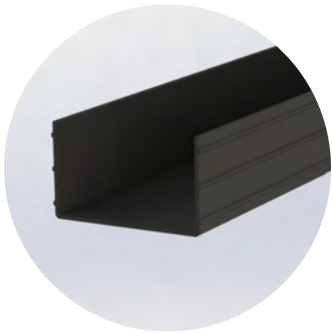
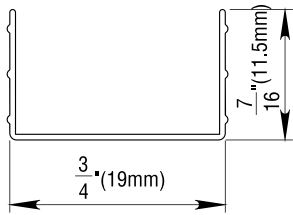


Description	Offset Mounting Plate
Item #	OMP-2
Weight, lb	0.17
Quantity, pcs	1

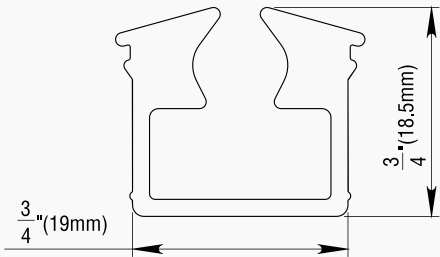


SYSTEM COMPONENTS

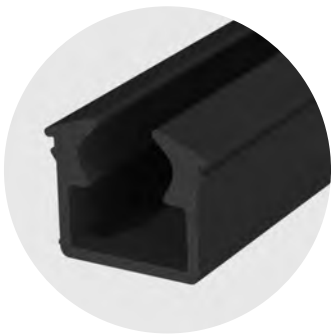
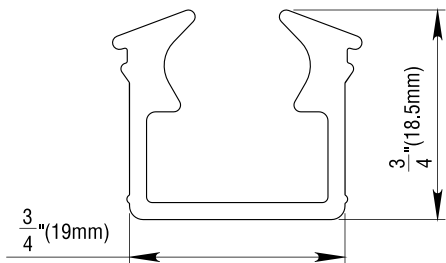
Description	Picket Gasket
Item #	PG-1
Weight, lb/ft	0.01
Lenght	500'



Description	Glass Gacket
Item #	GG -2
Weight, lb/ft	0.12
Lenght	500'

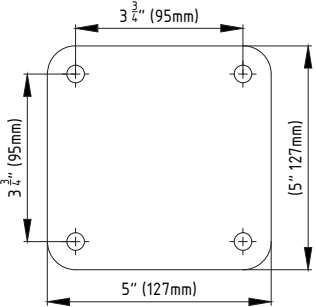


Description	Glass Gacket
Item #	GG-3
Weight, lb/ft	0.11
Lenght	500'

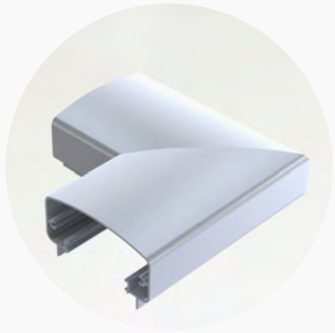
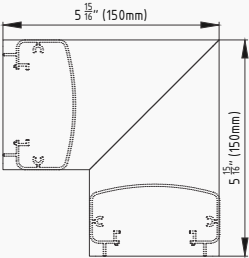


SYSTEM COMPONENTS

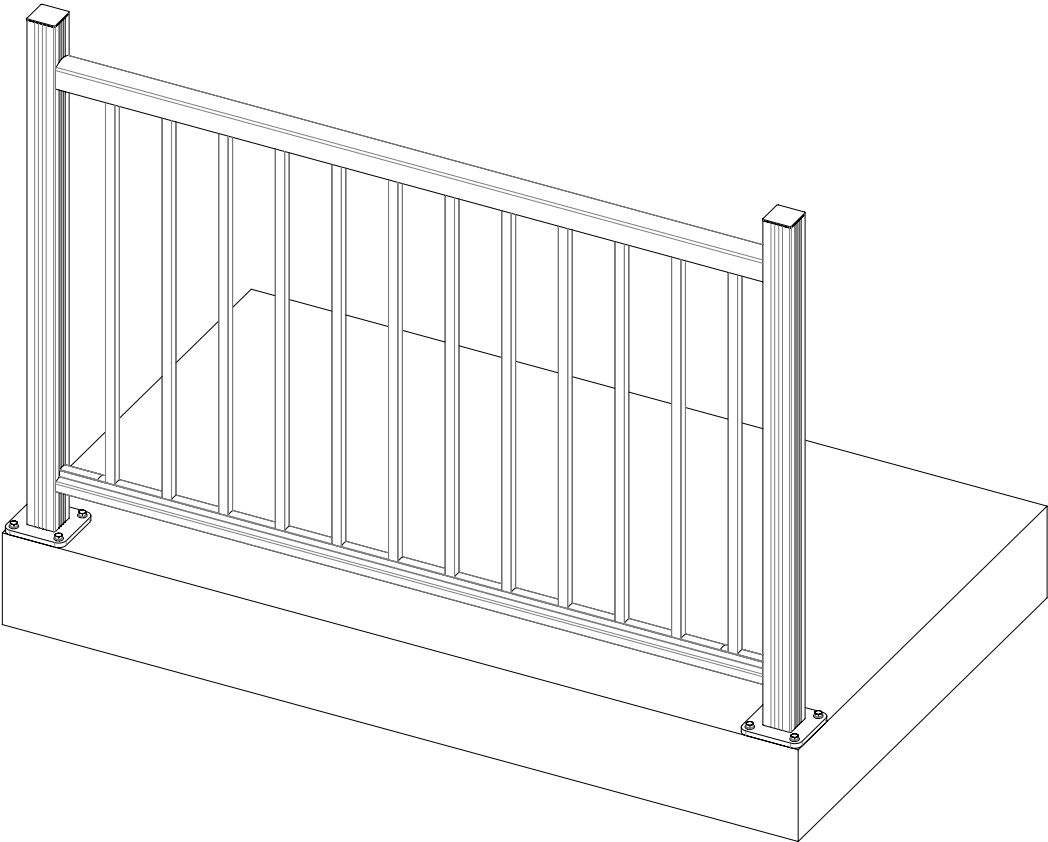
Description	Moisture Barrier Gasket
Item #	MBG-1
Weight, lb	0.13
Quantity, pcs	1



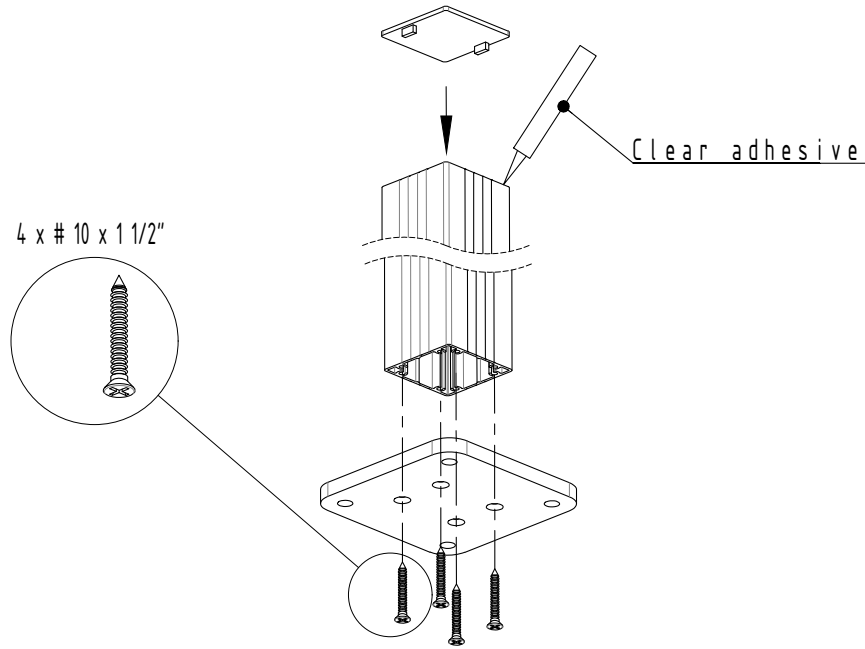
Description	Handrail Connector
Item #	HRC-1
Weight, lb	0.51
Quantity, pcs	1



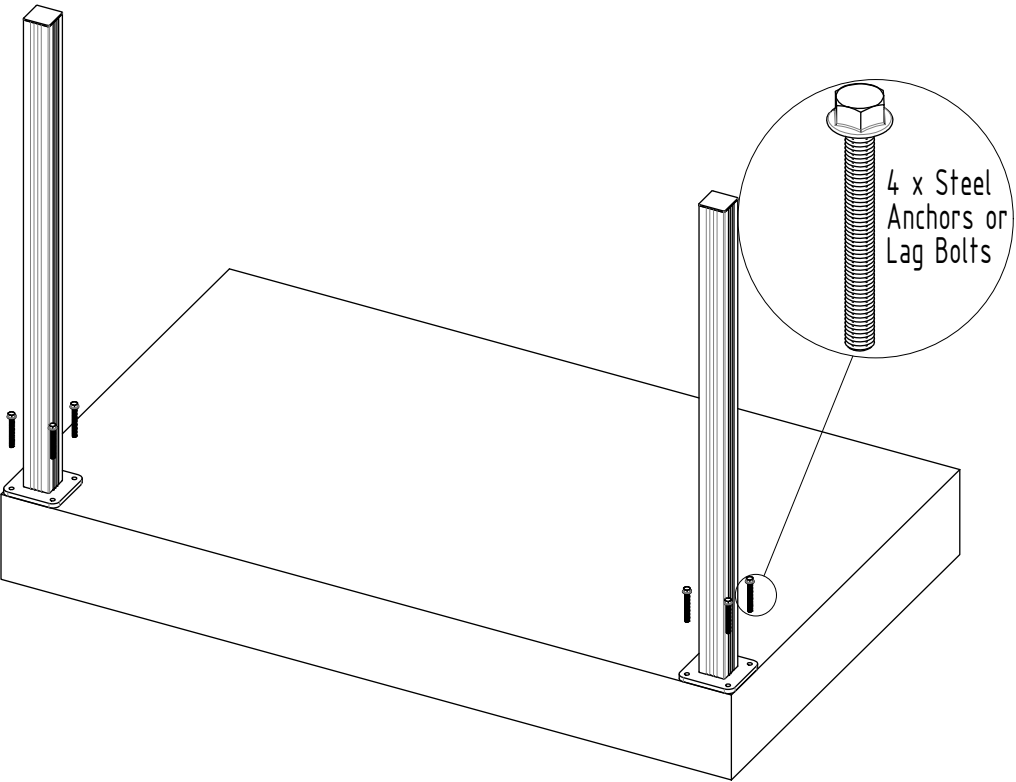
1



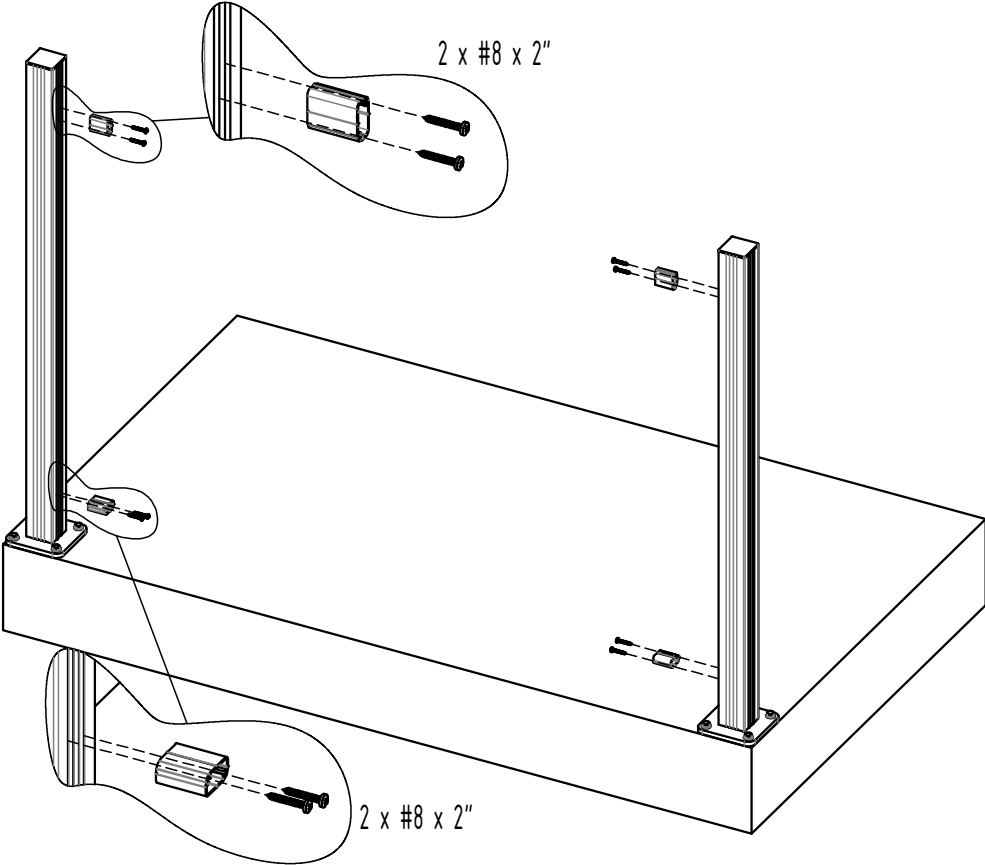
1.1



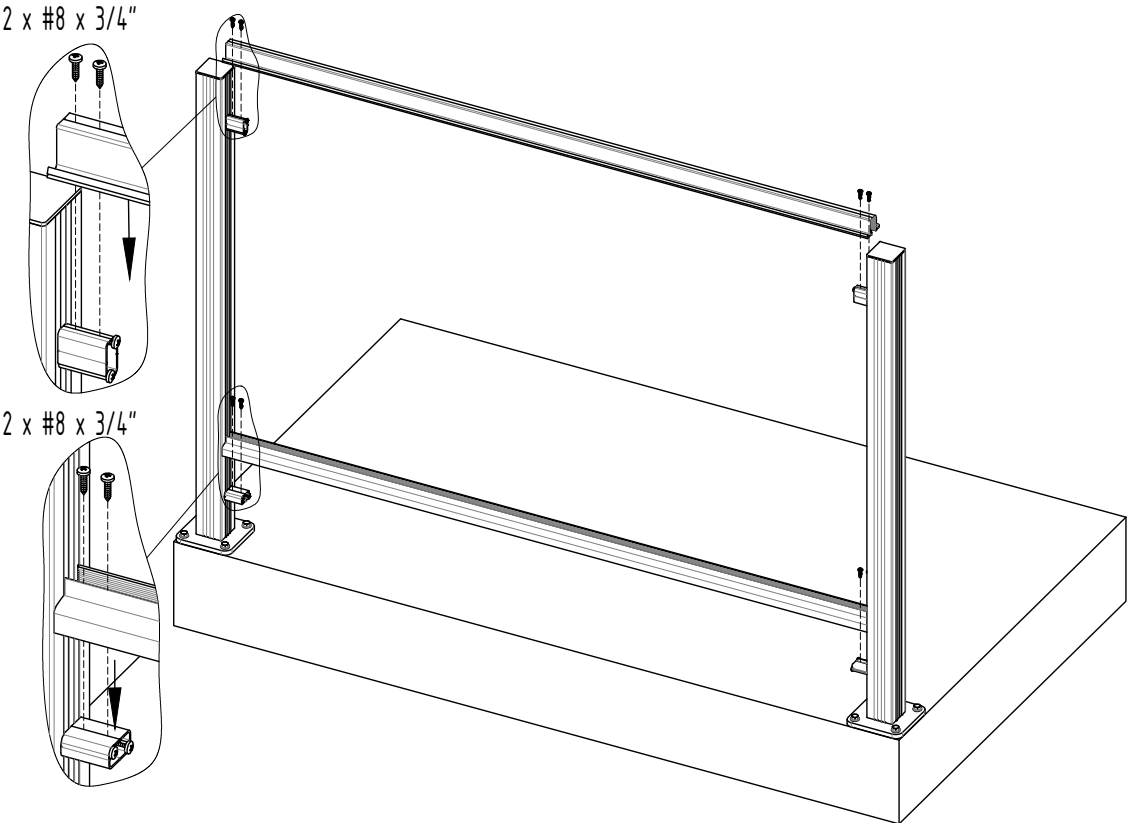
1.2



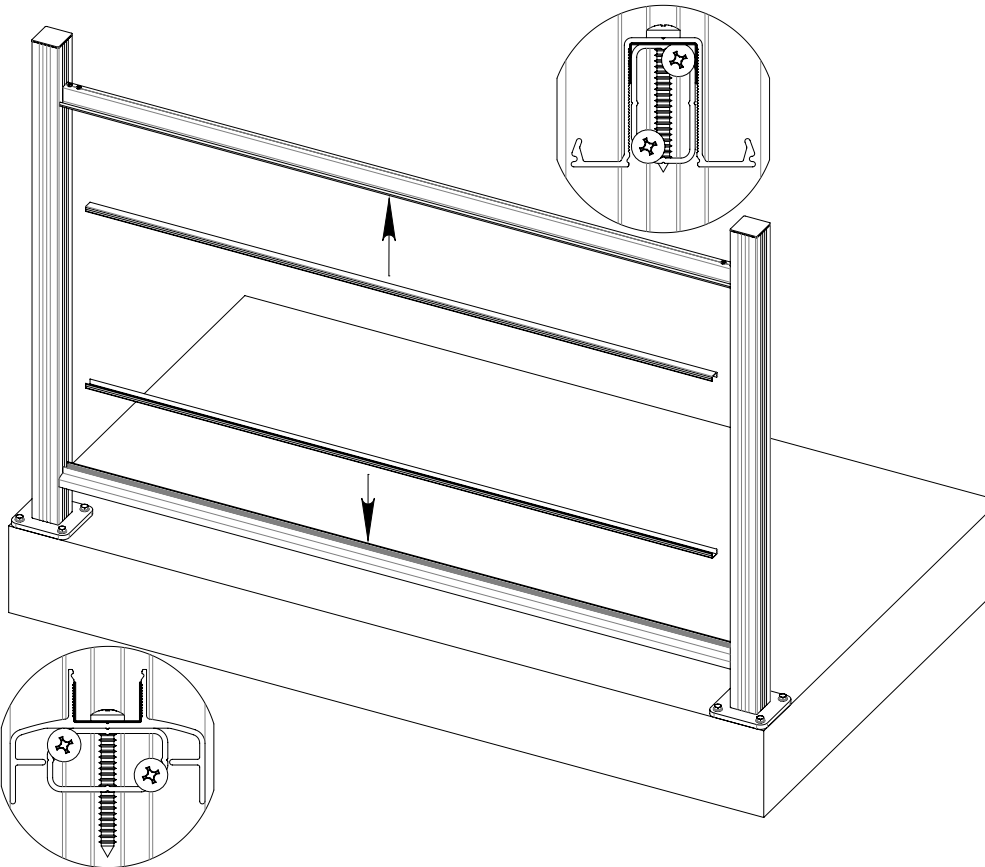
1.3



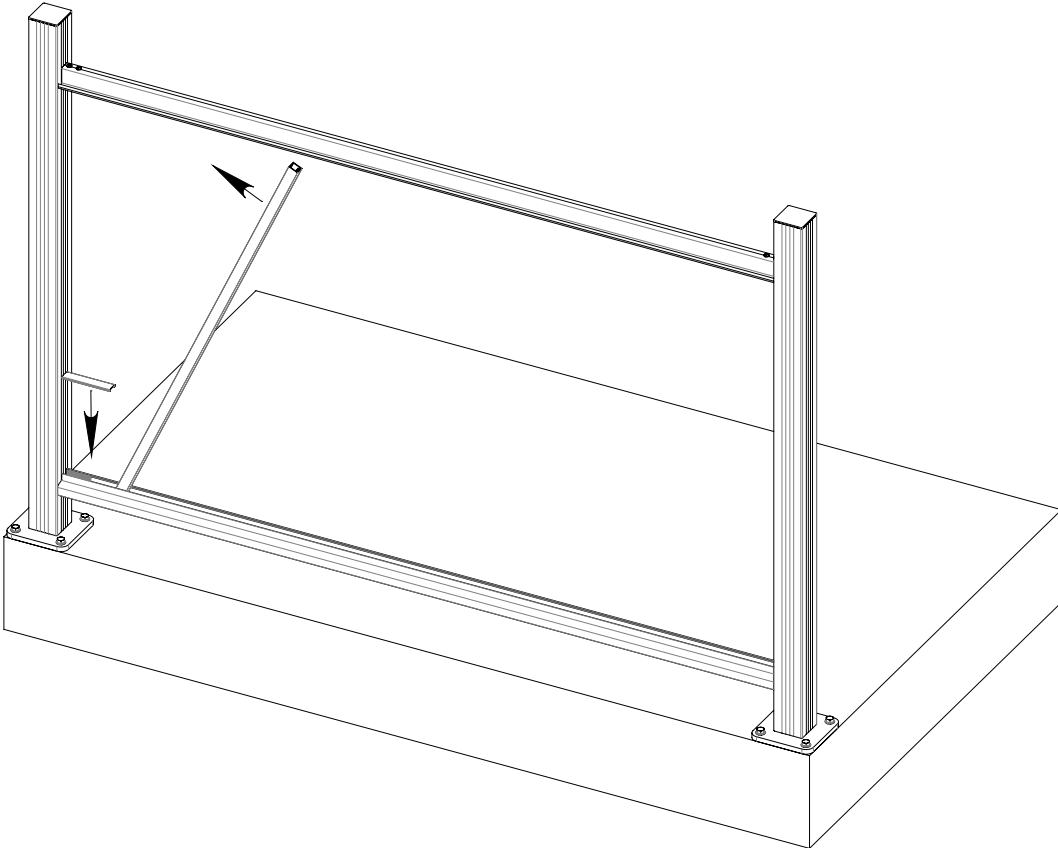
1.4



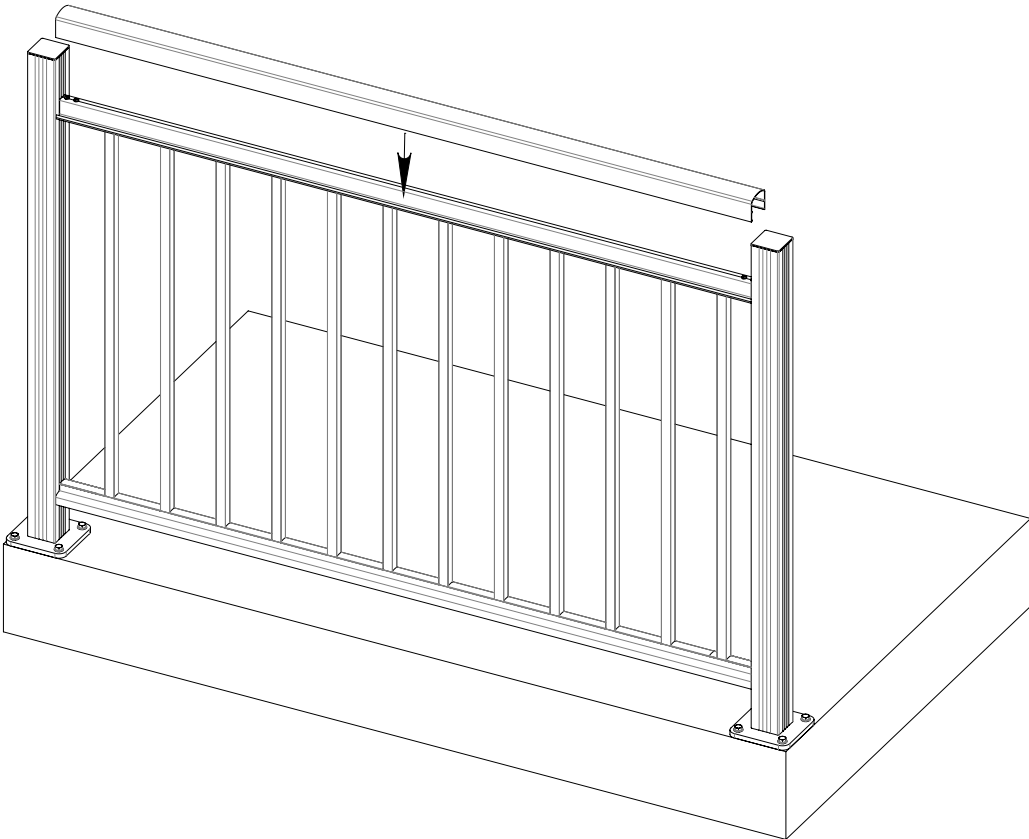
1.5



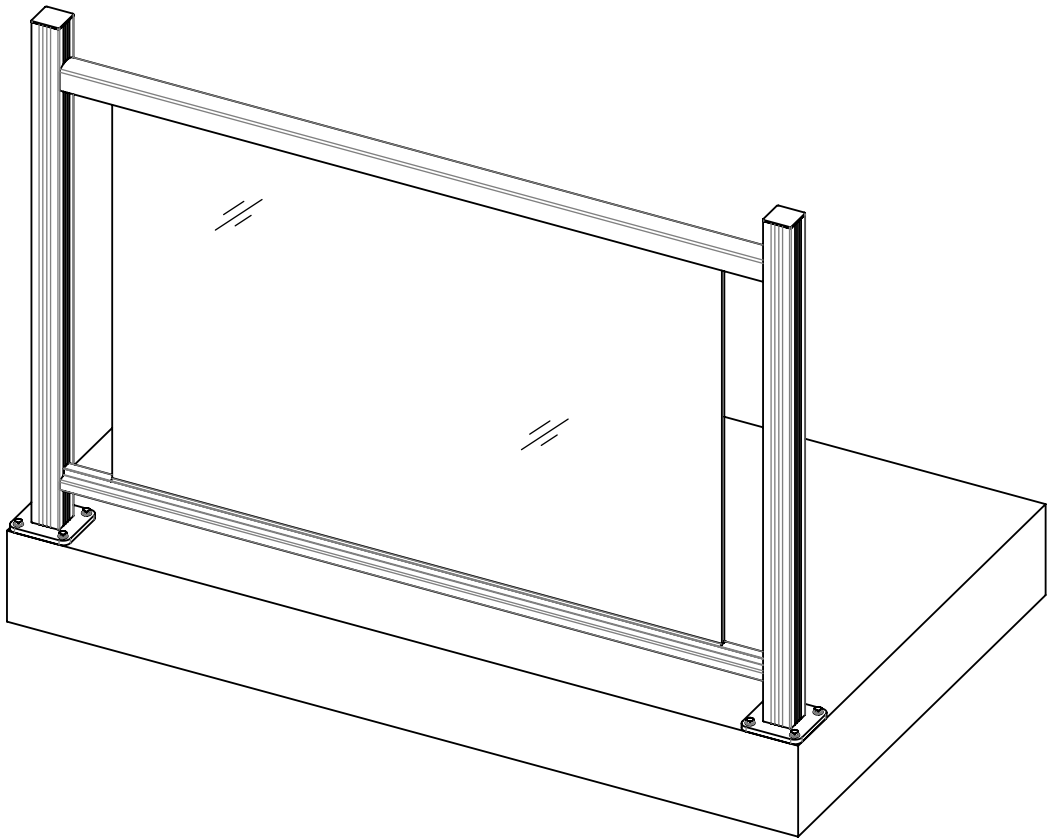
1.6



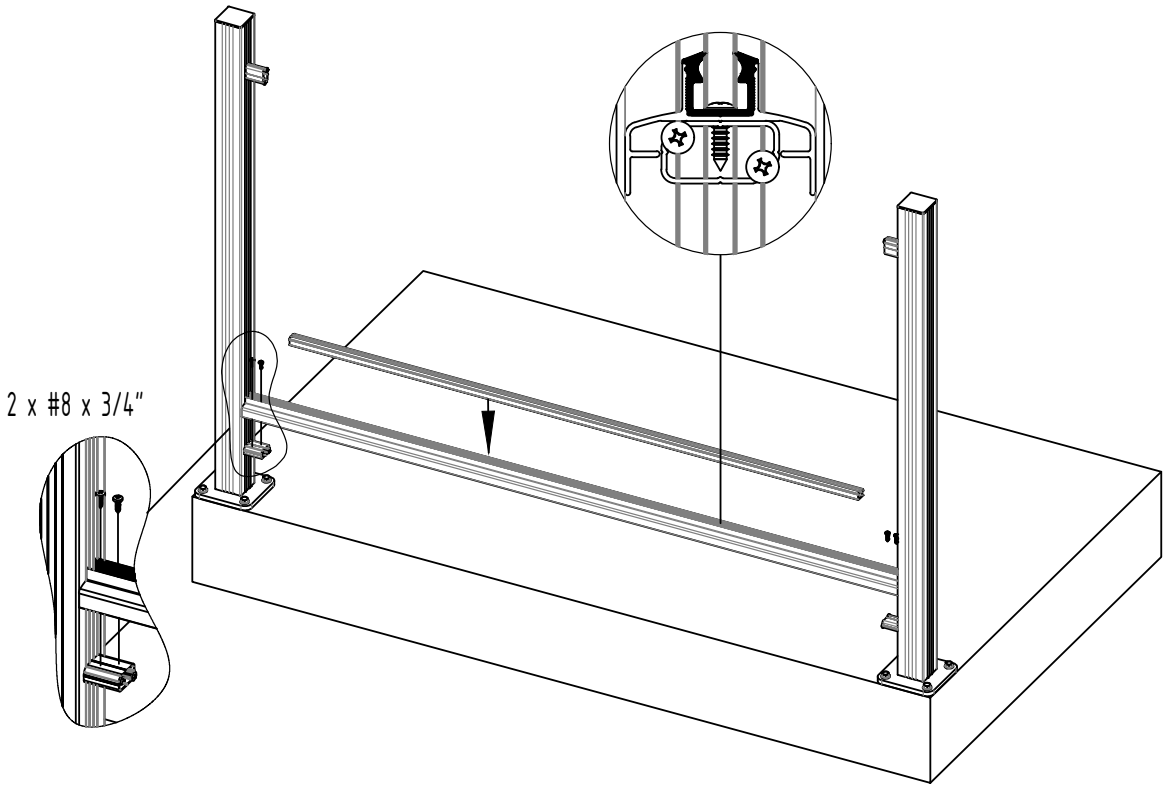
1.7



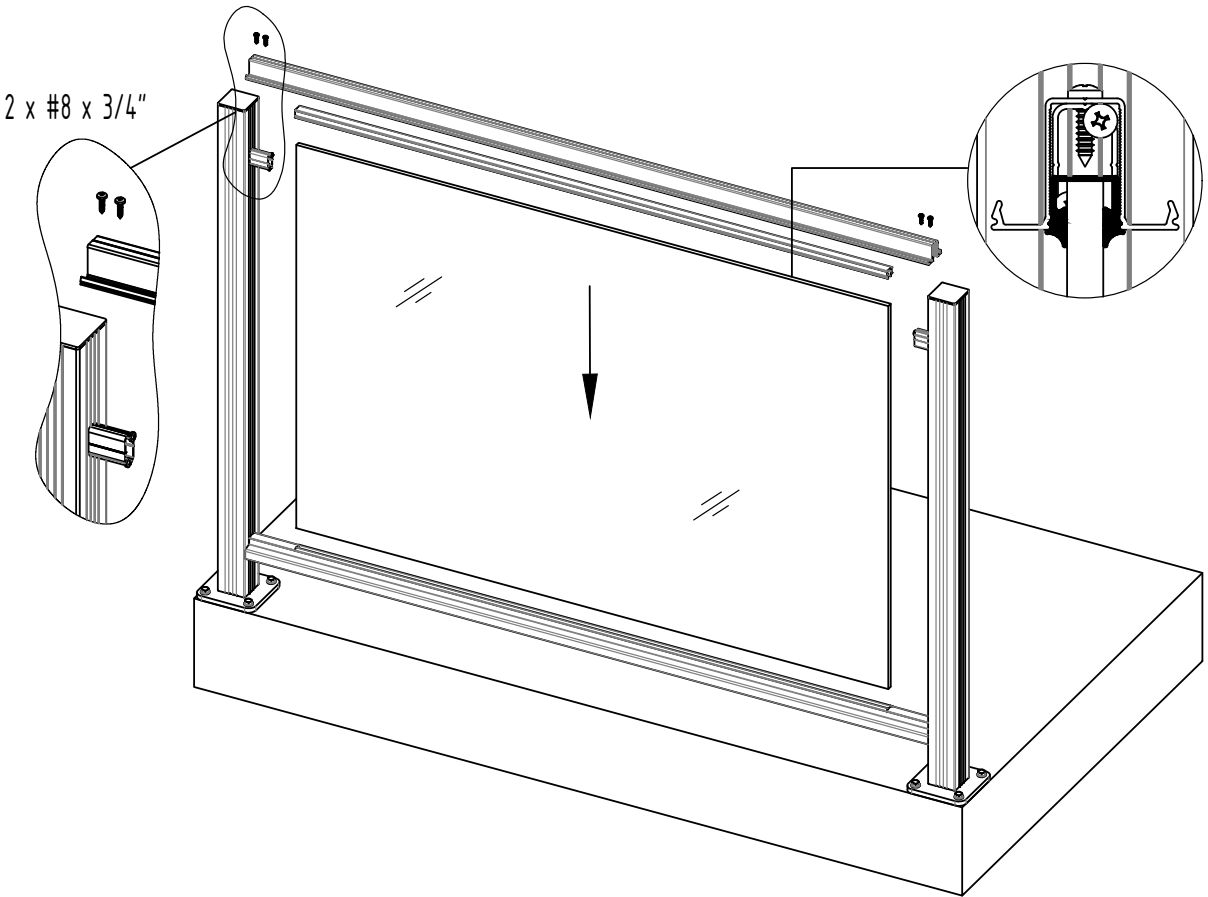
2



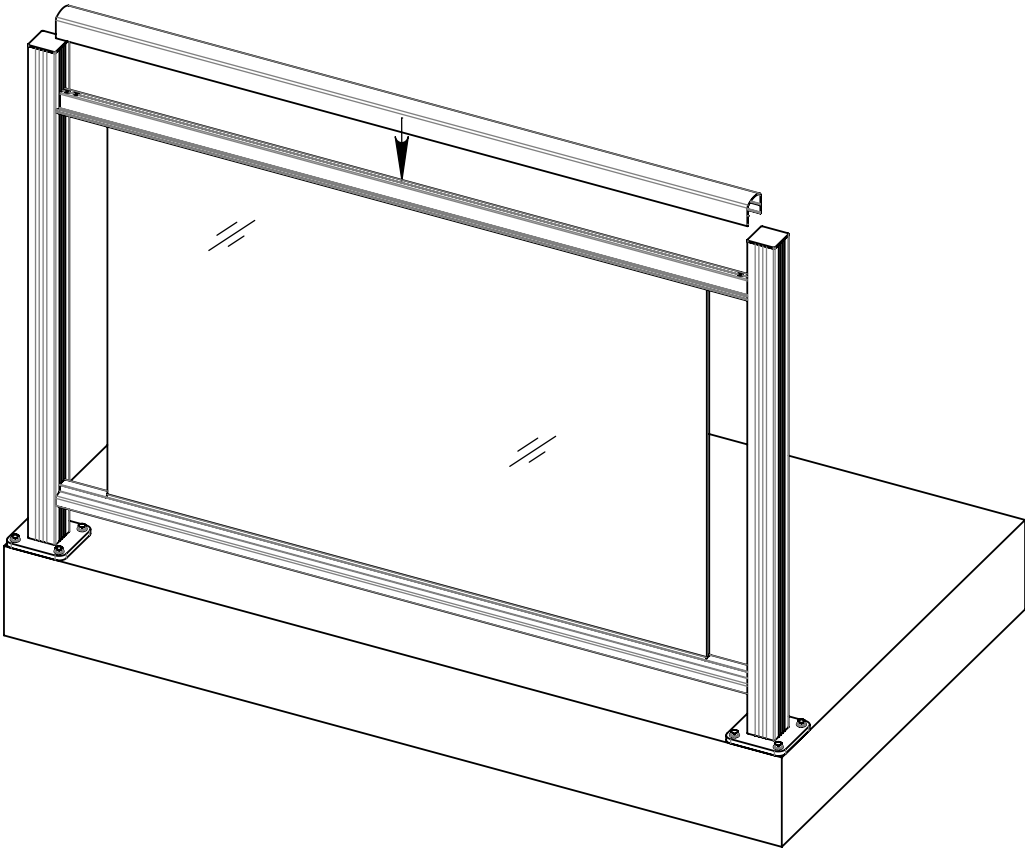
2.1 First complete steps 1.1-1.2



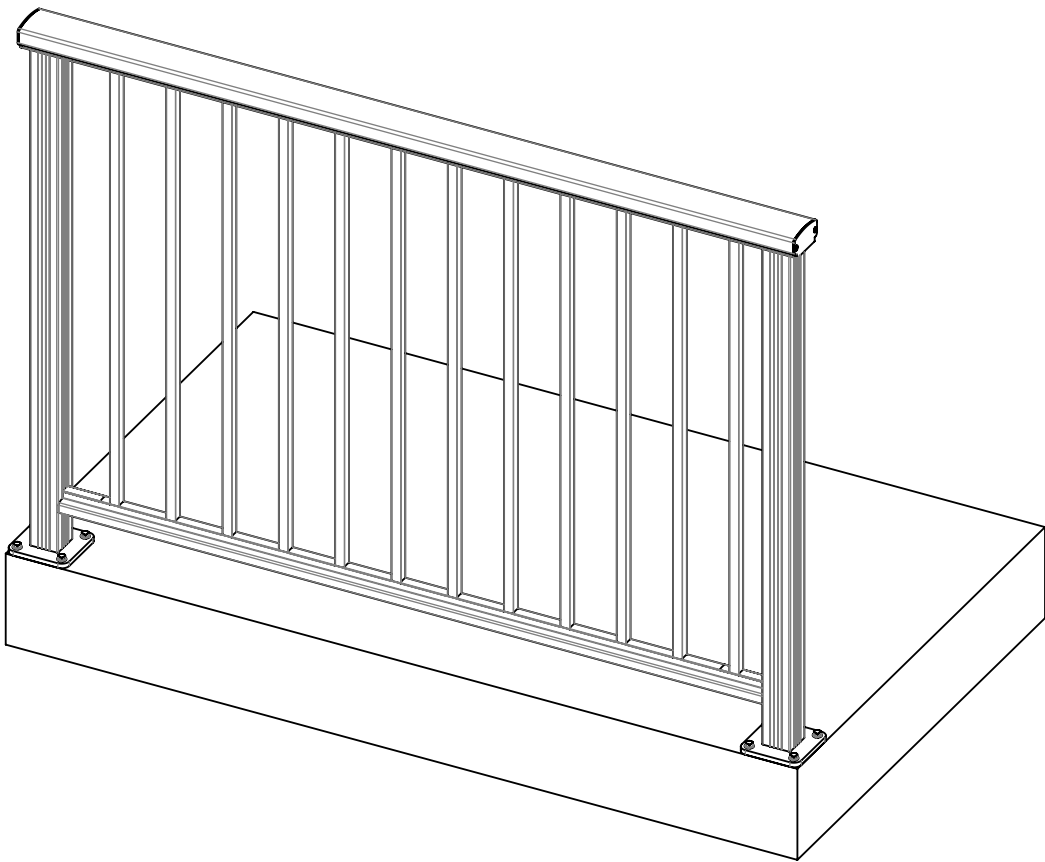
2.2



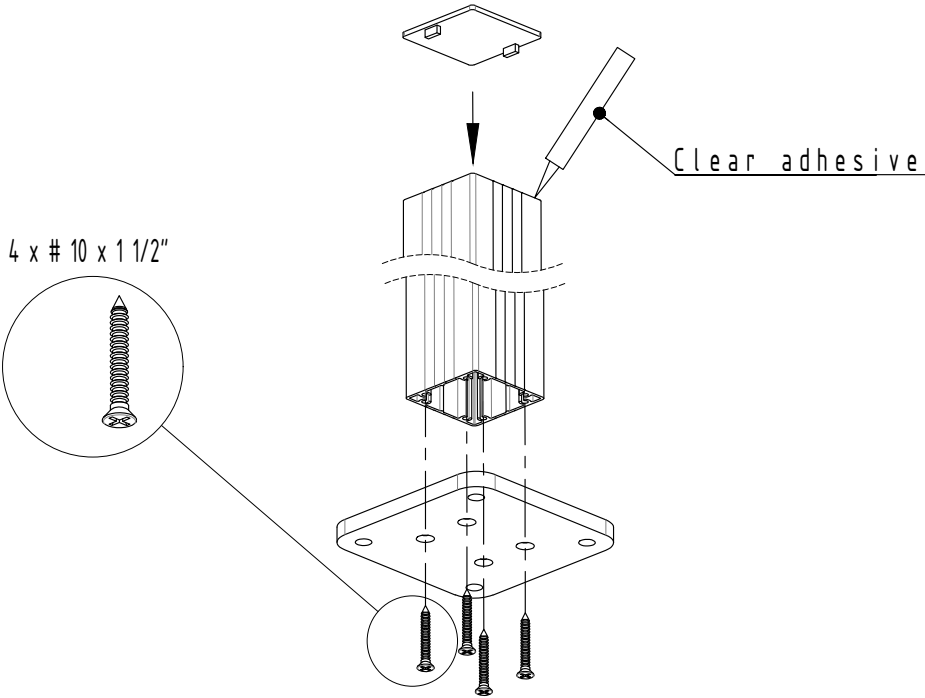
2.3



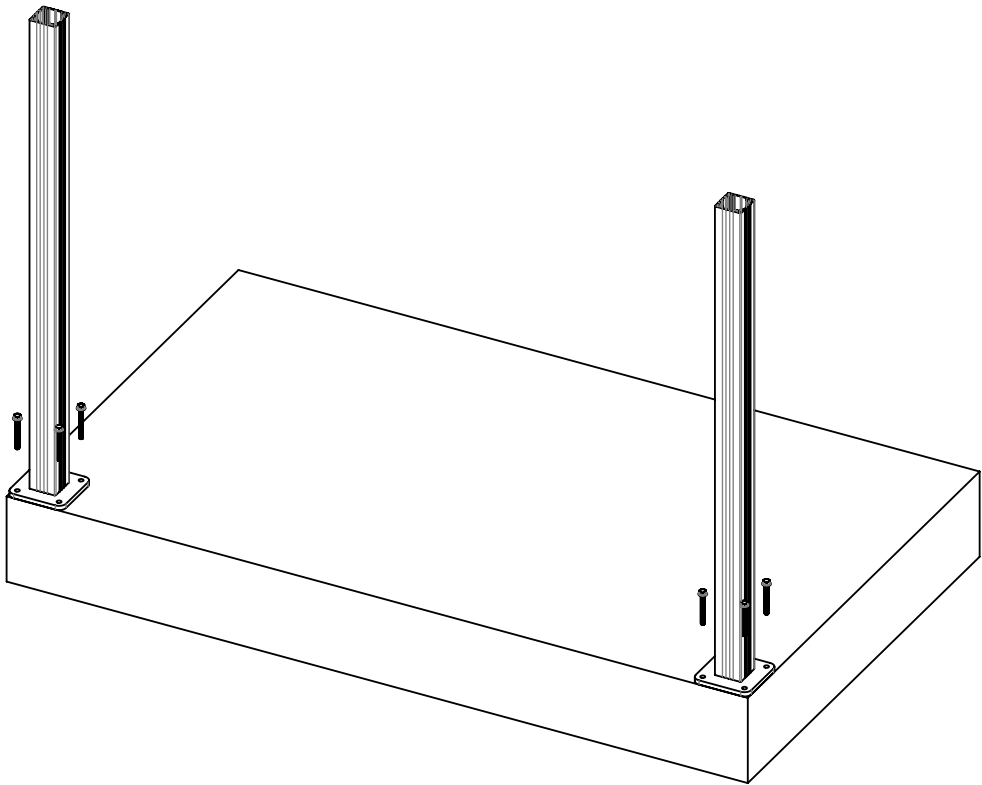
3



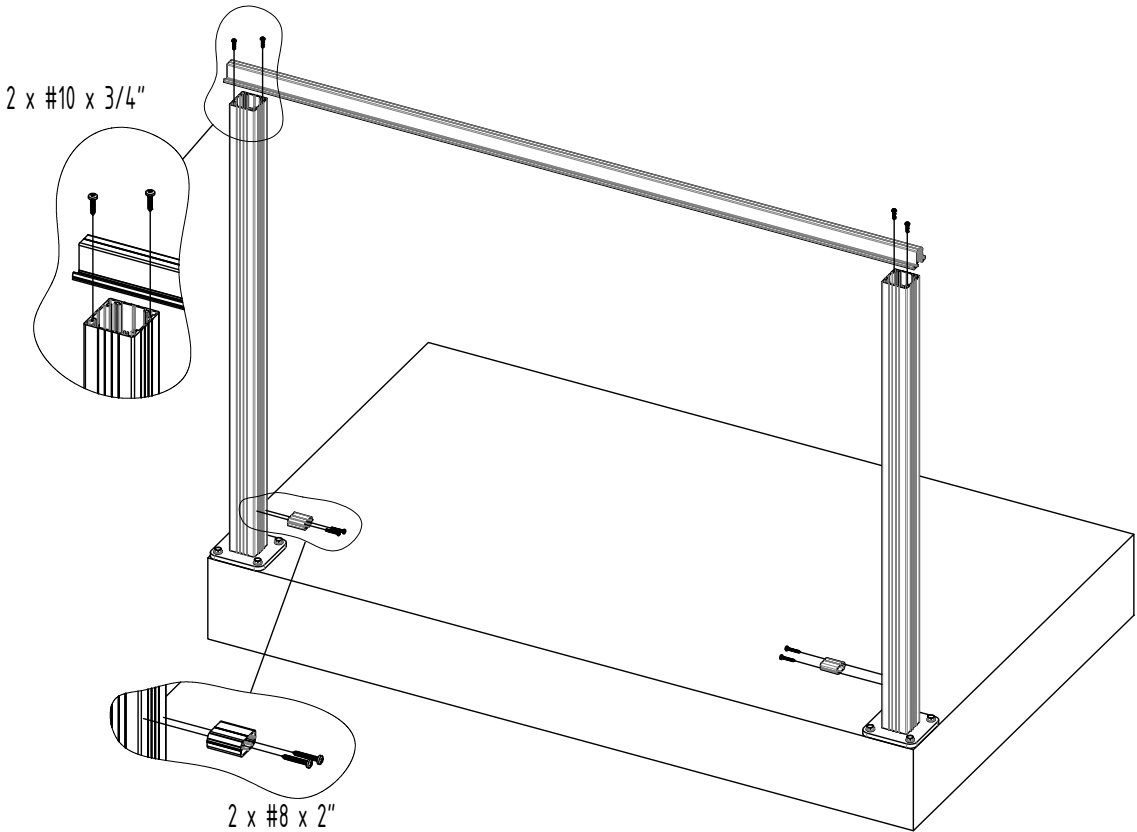
3.1



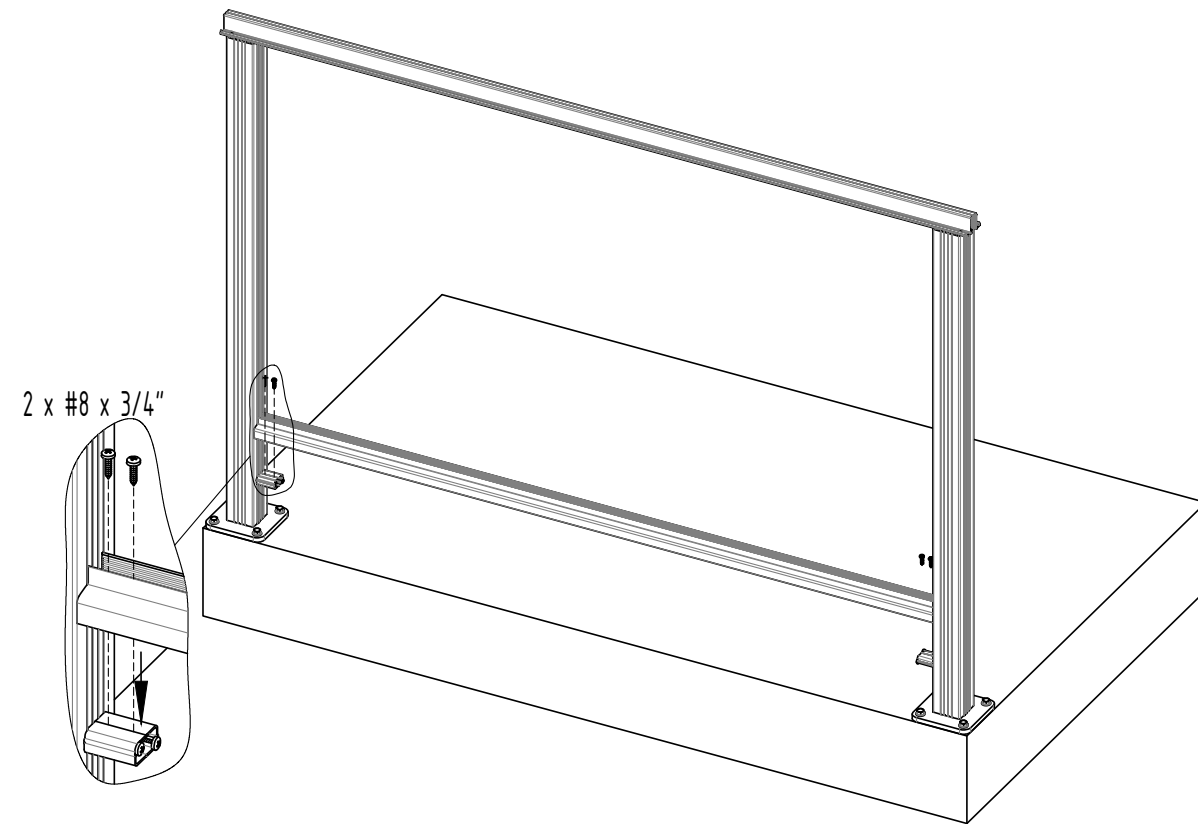
3.2



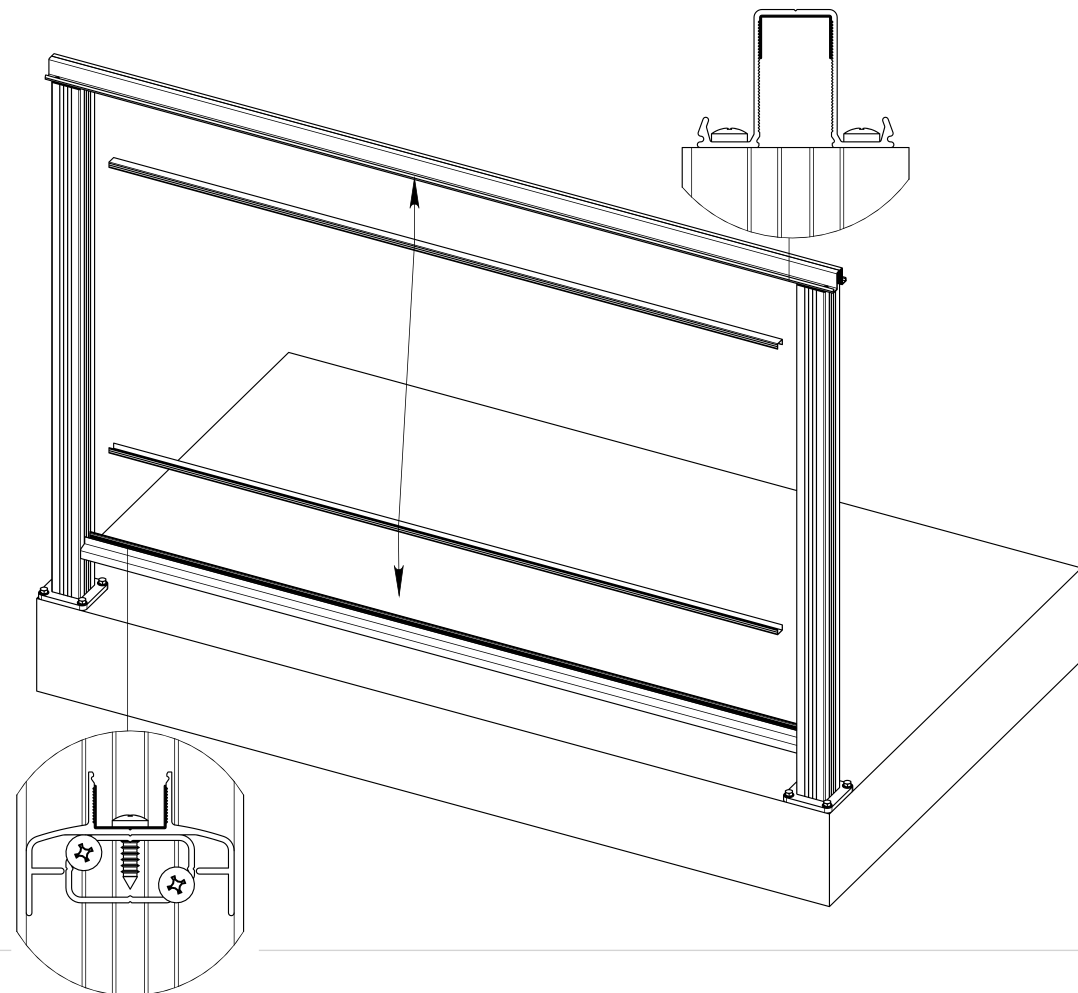
3.3



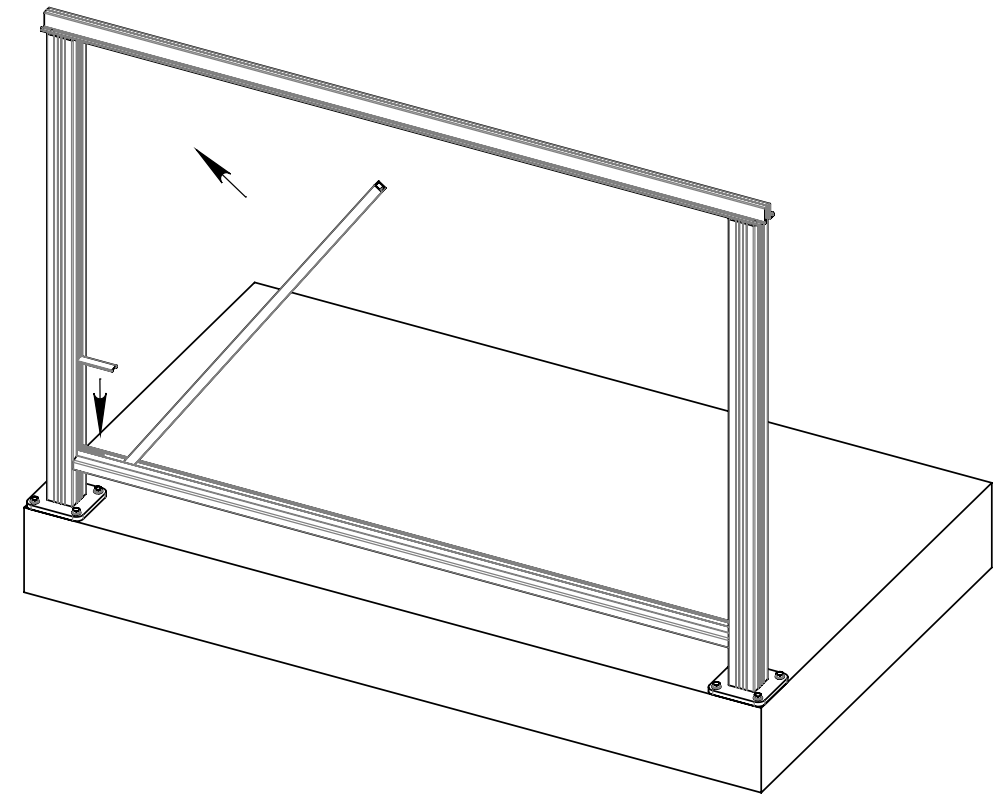
3.4



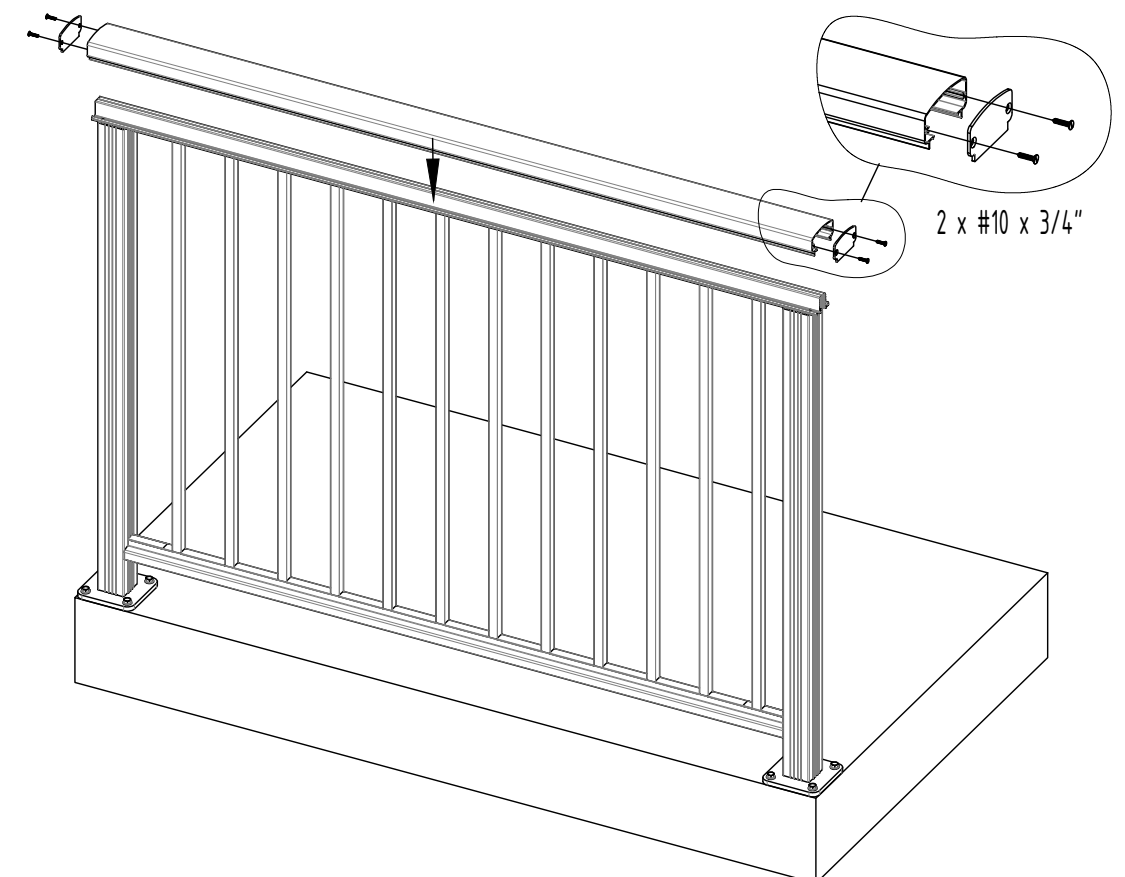
3.5



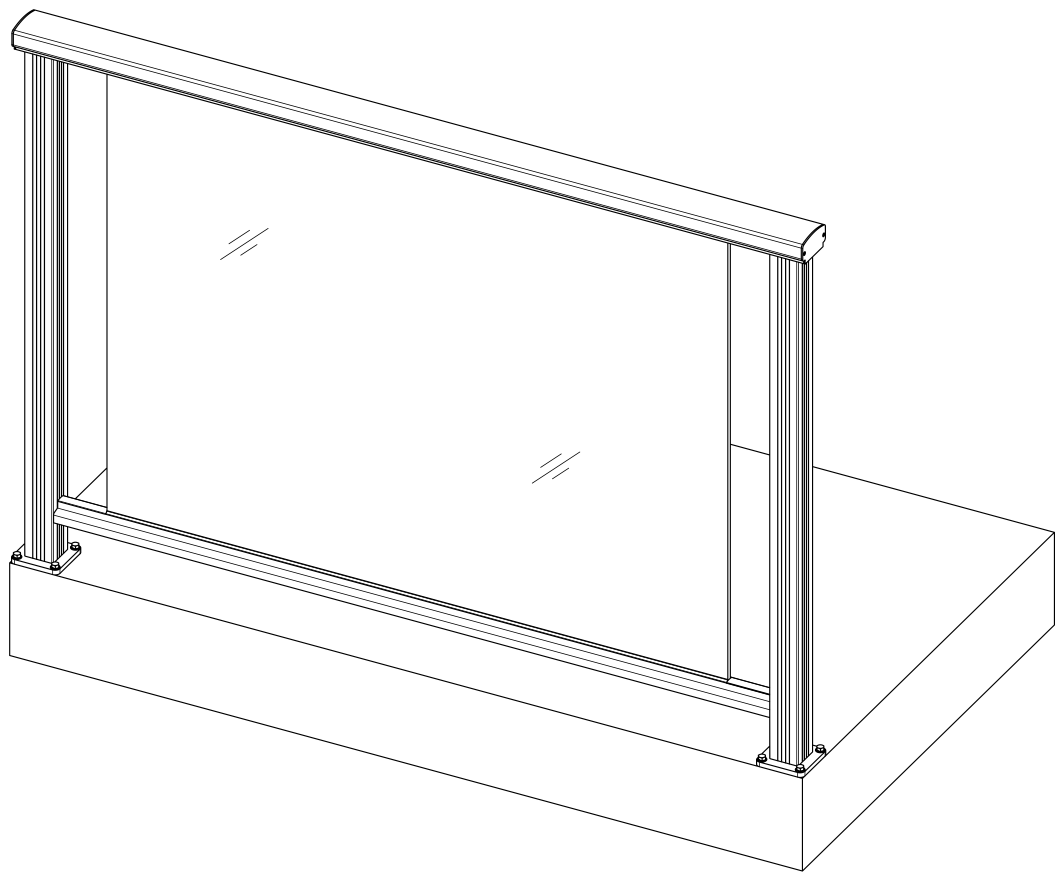
3.6



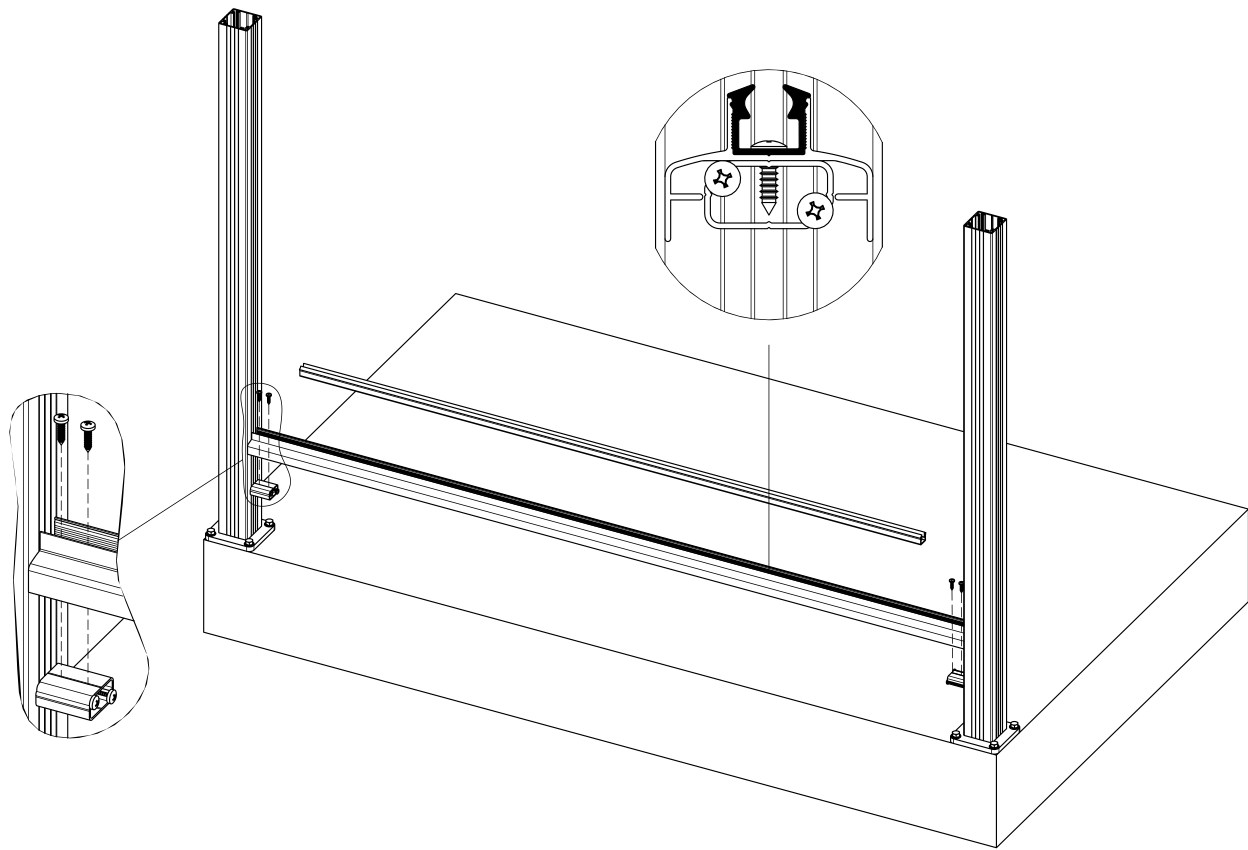
3.7



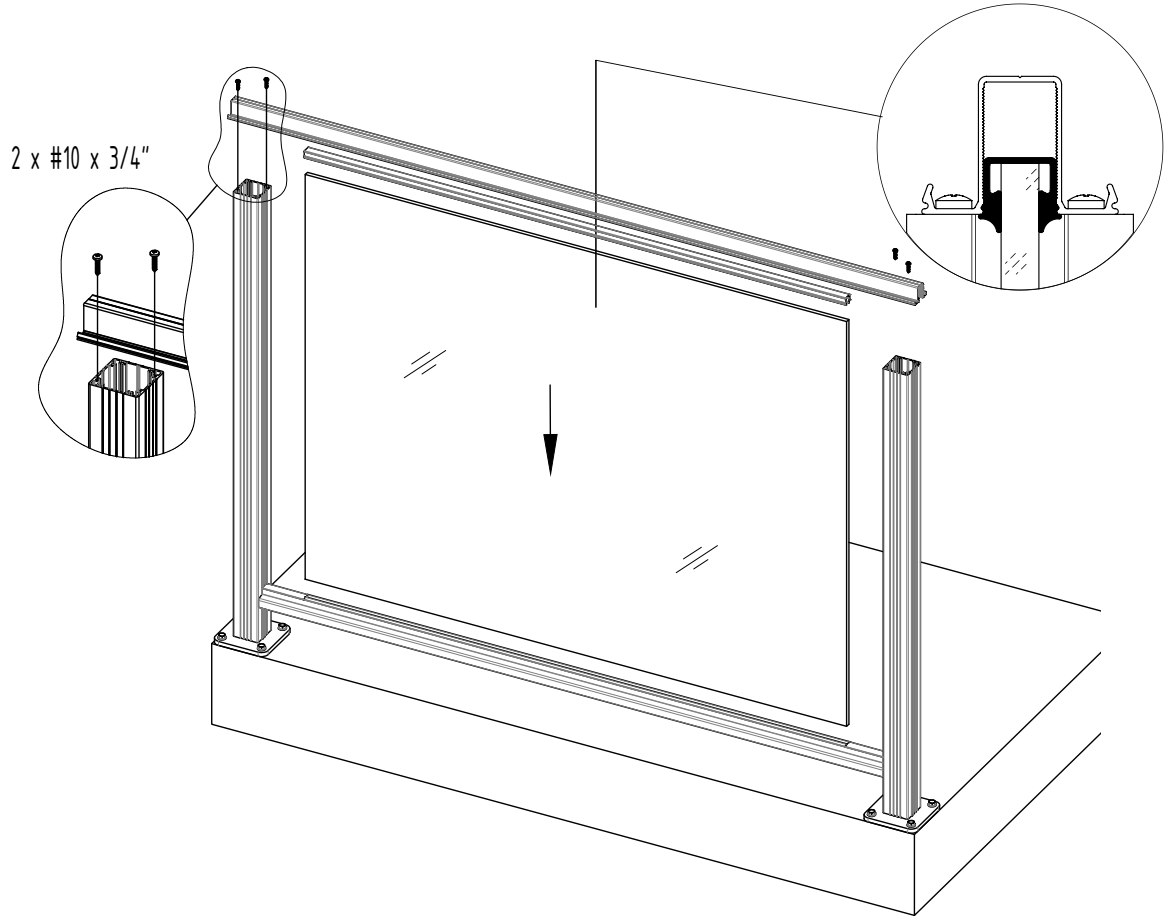
4



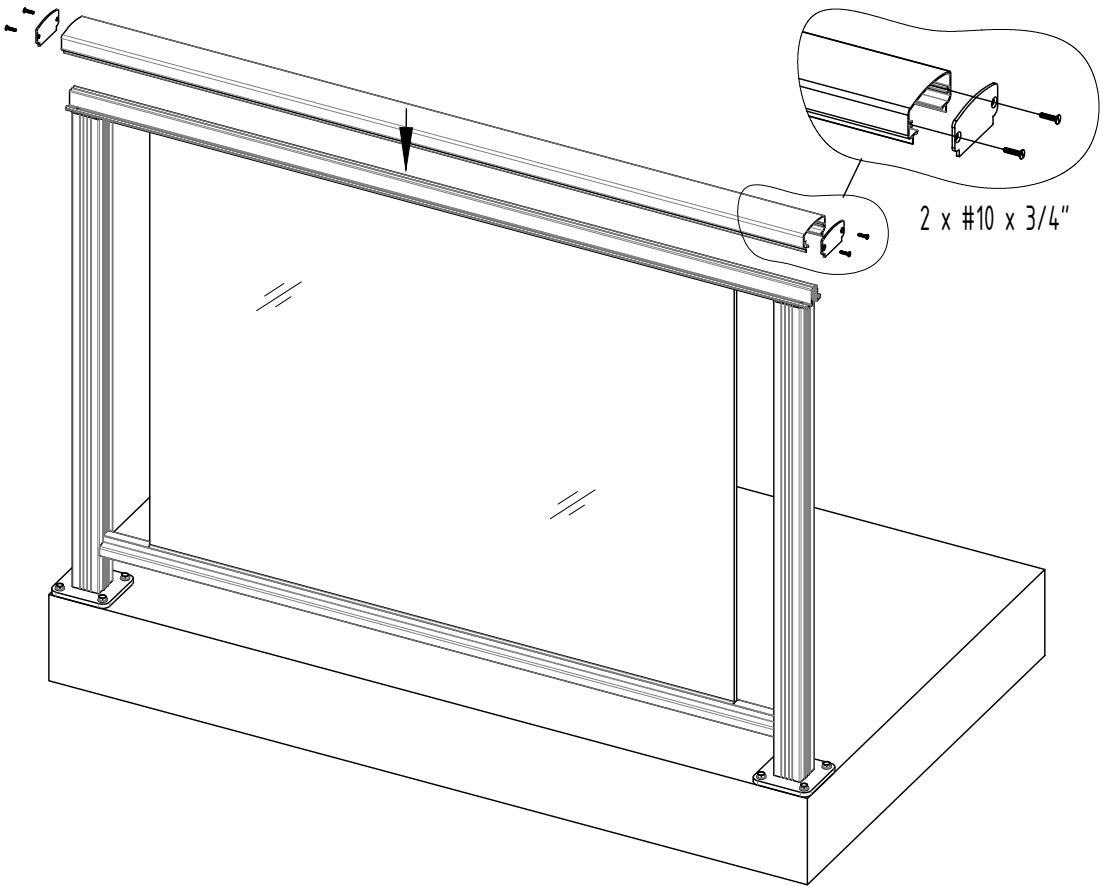
4.1 First complete steps 3.1-3.2



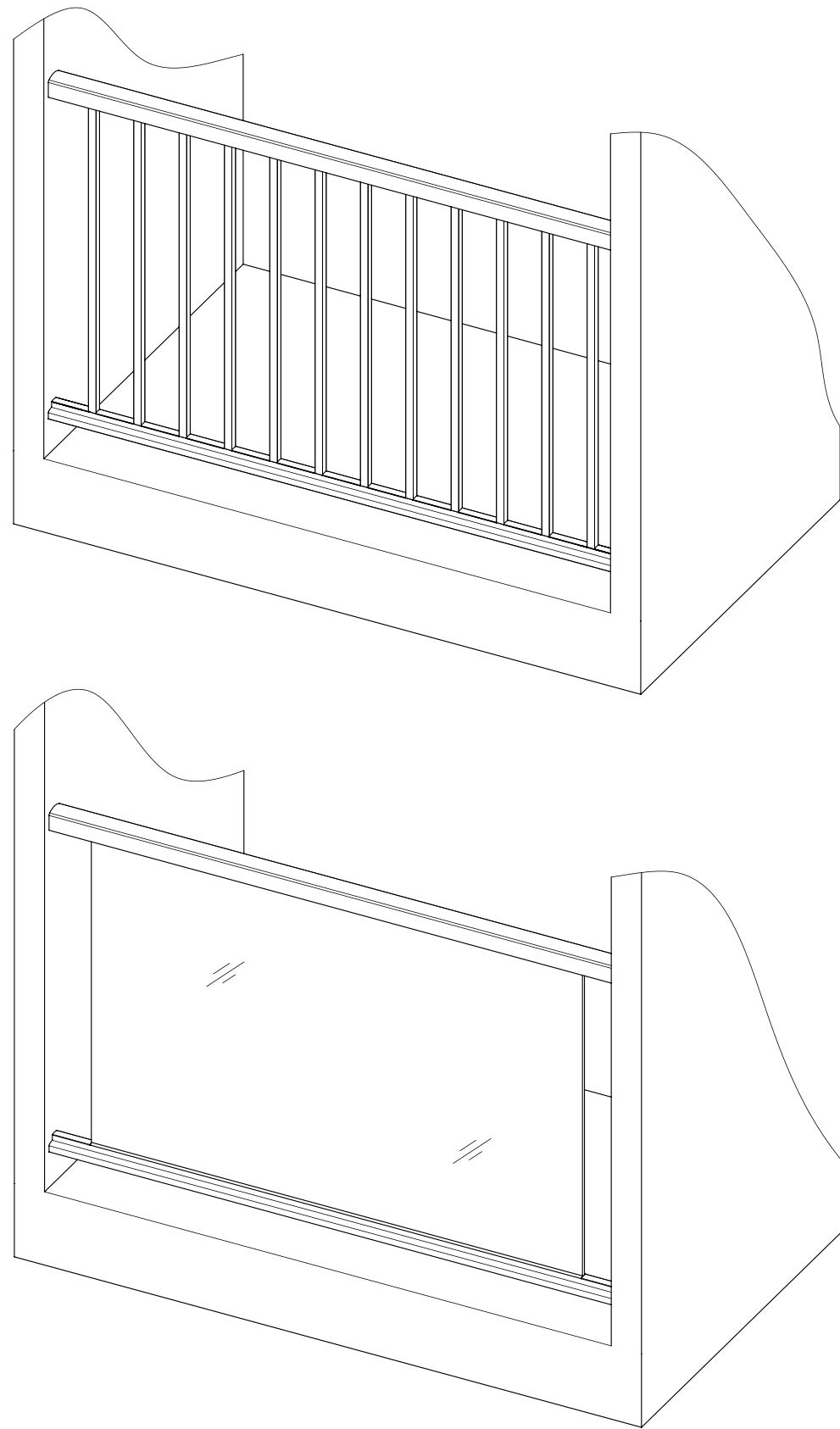
4.3



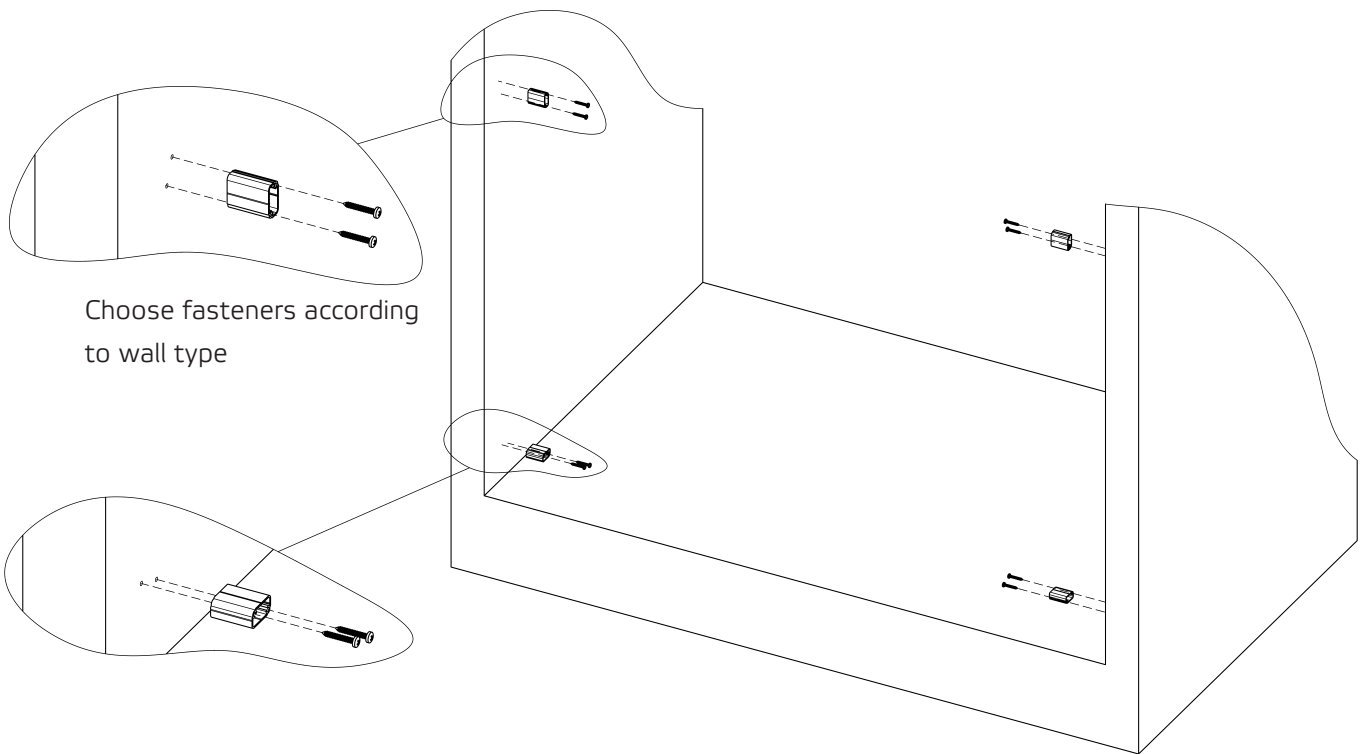
4.4



5

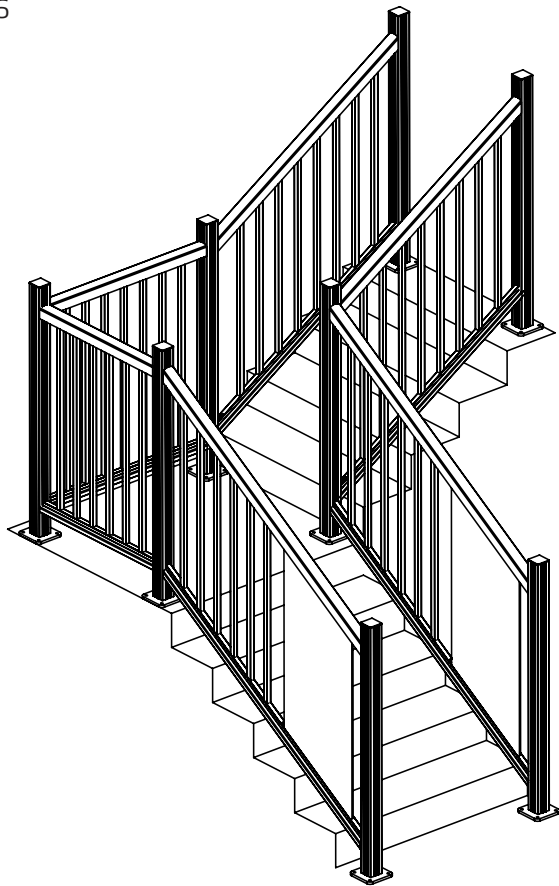


5.1

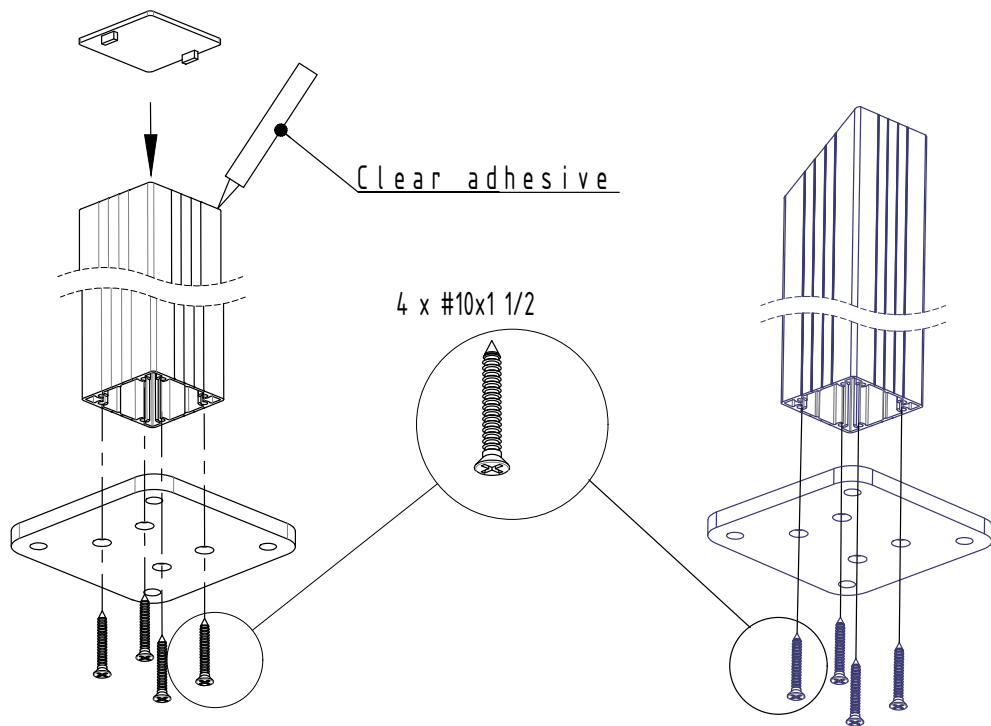


5.2 Then complete steps 1.4 - 1.7, or 2.2 - 2.4, or 3.3 - 3.7, or 4.2 - 4.4, depending on the desired railing type.

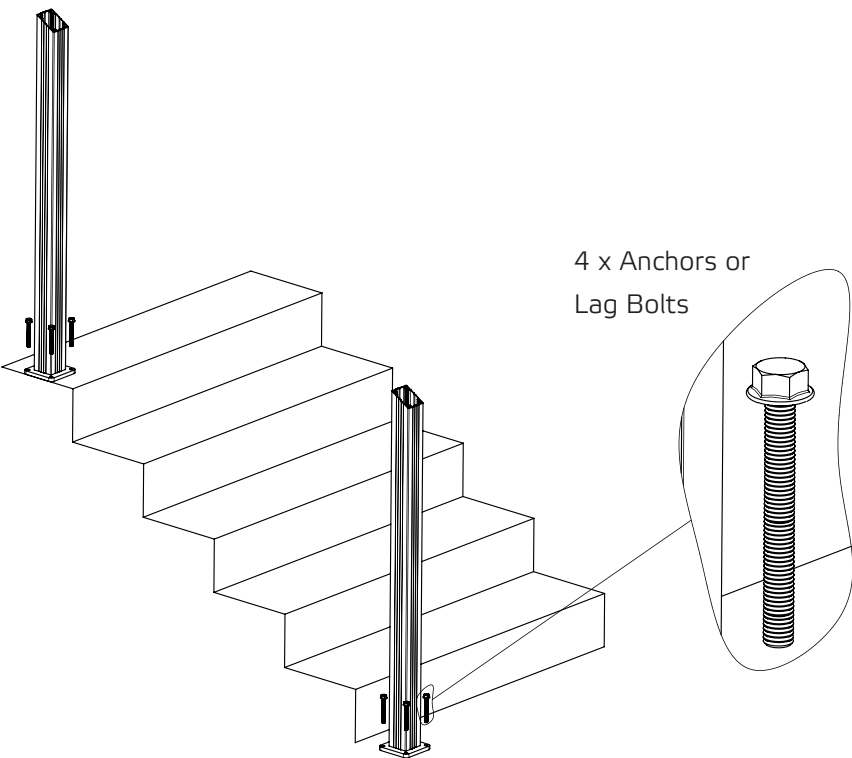
6



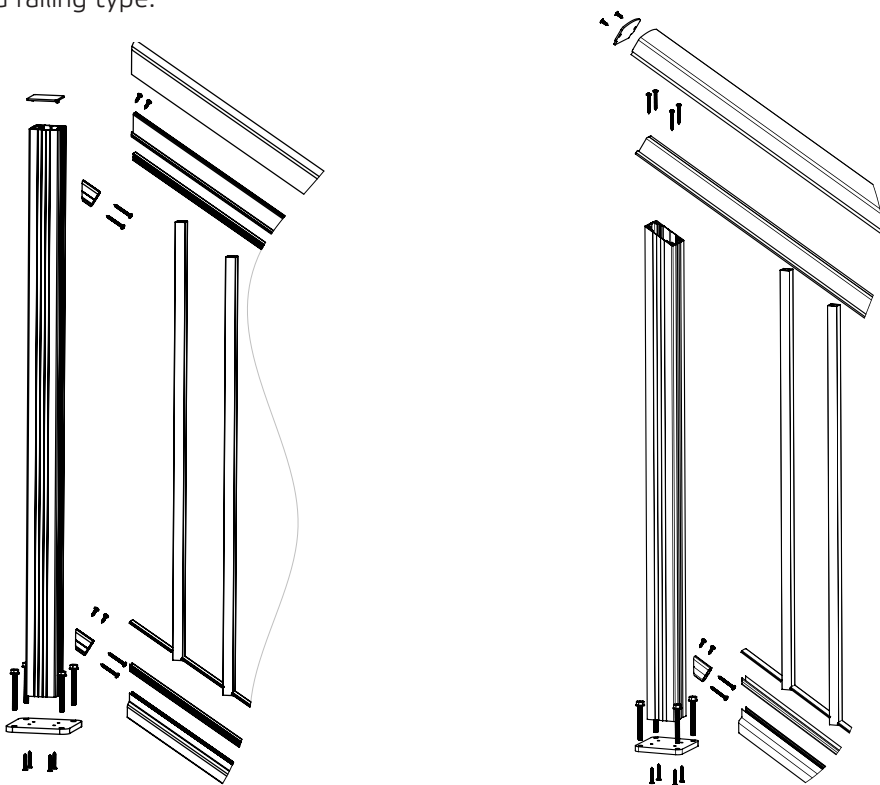
6.1



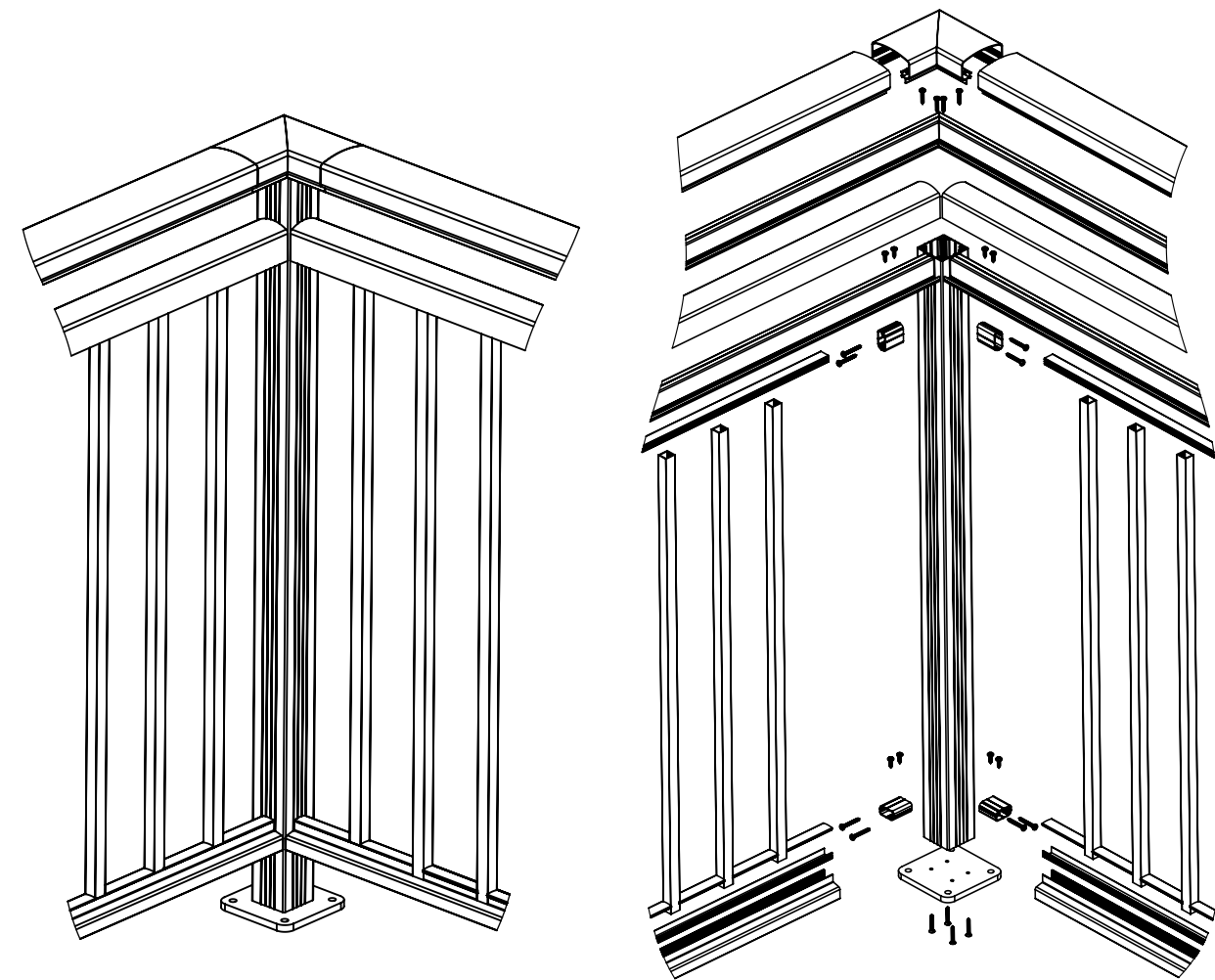
6.2



6.3 Then complete steps 1.4 - 1.7, or 2.2 - 2.4, or 3.3 - 3.7, or 4.2 - 4.4, depending on the desired railing type.



7 90 degree connection



8 Various angle connection

